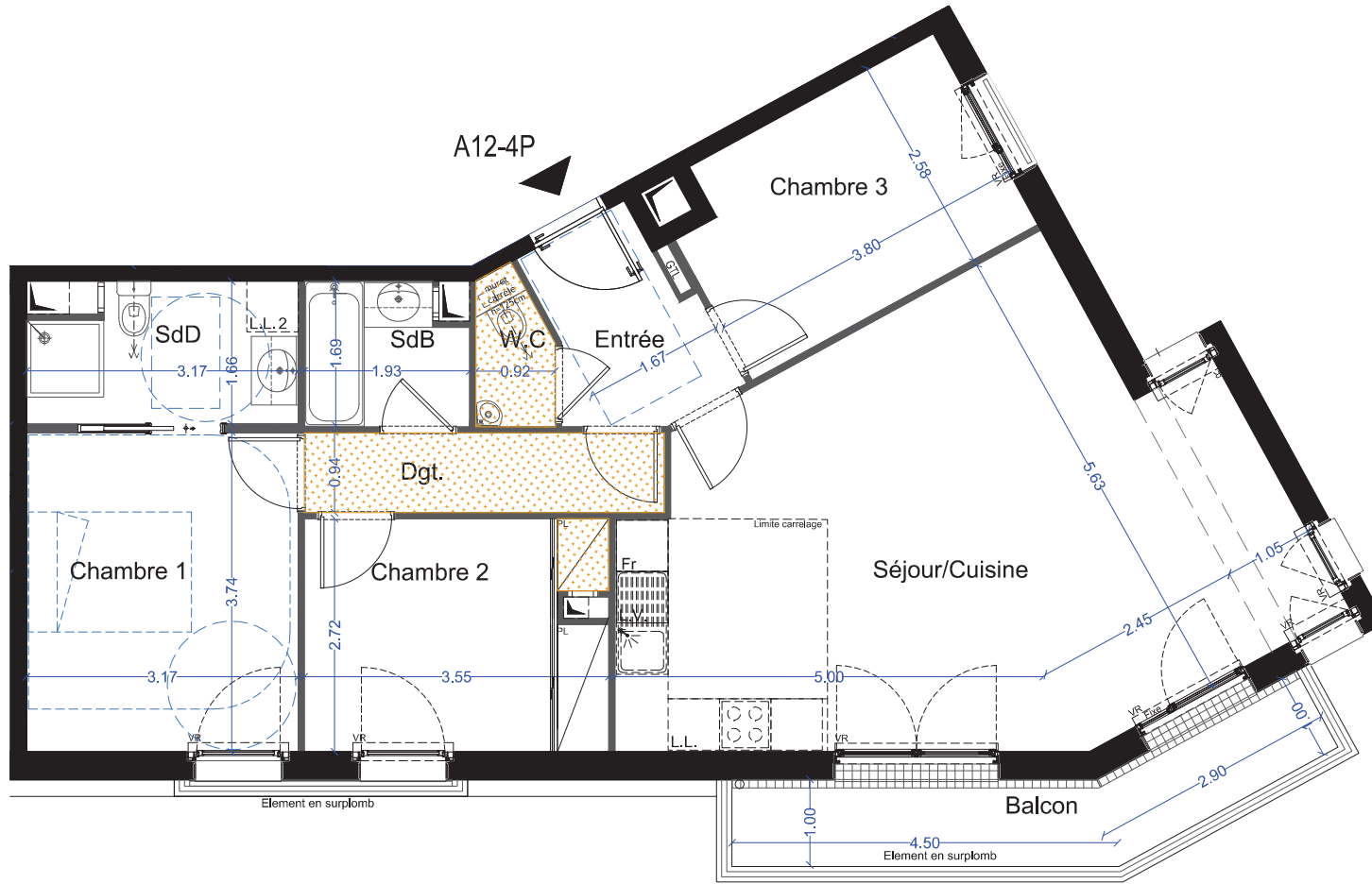
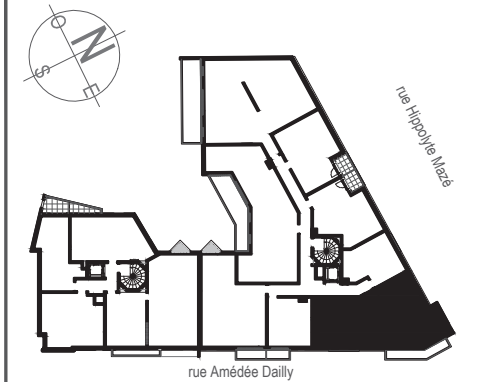




Construction de
53 logements
46-50 rue Amedée DAILLY
78 220 VIROFLAY



APPARTEMENT	TYPE	NIVEAU
A12	4P	R+1

TABLEAU DES SURFACES

Entrée	4.20 m ²
Séjour/Cuisine	35.30 m ²
Chambre 1	11.80 m ²
Chambre 2	9.45 m ²
Chambre 3	9.25 m ²
Dgt.	3.90 m ²
SdD	4.95 m ²
SdB	3.05 m ²
WC	1.50 m ²
Surface Habitable	83.40 m²
Balcon	7.30 m ²