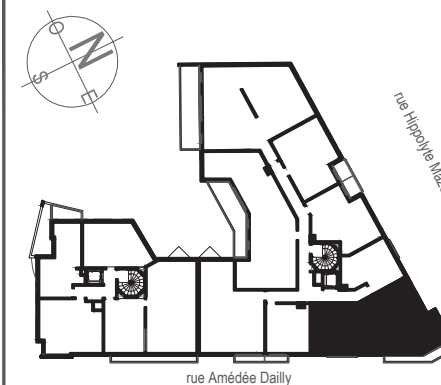


Construction de 53 logements

46-50 rue Amedée DAILLY
78 220 VIROFLAY



| APPARTEMENT | TYPE | NIVEAU |
|-------------|------|--------|
| A32 | 4P | R+3 |

TABLEAU DES SURFACES

| | |
|--------------------------|----------------------------|
| Entrée | 4.20 m ² |
| Séjour/Cuisine | 35.30 m ² |
| Chambre 1 | 11.80 m ² |
| Chambre 2 | 9.45 m ² |
| Chambre 3 | 9.25 m ² |
| Dgt. | 3.90 m ² |
| SdD | 4.95 m ² |
| SdB | 3.05 m ² |
| WC | 1.50 m ² |
| Surface Habitable | 83.40 m² |
| Balcon | 6.05 m ² |