



**39 Avenue Jules Ferry
93420 VILLEPINTE**

2 IMMEUBLES R + 2
33 APPARTEMENTS

BAT.	APP.	TYPE	ETAGE
B	03	2P	RDC

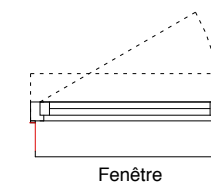
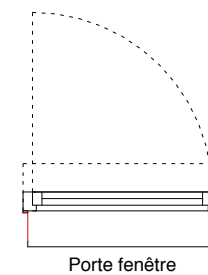
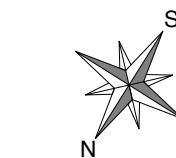
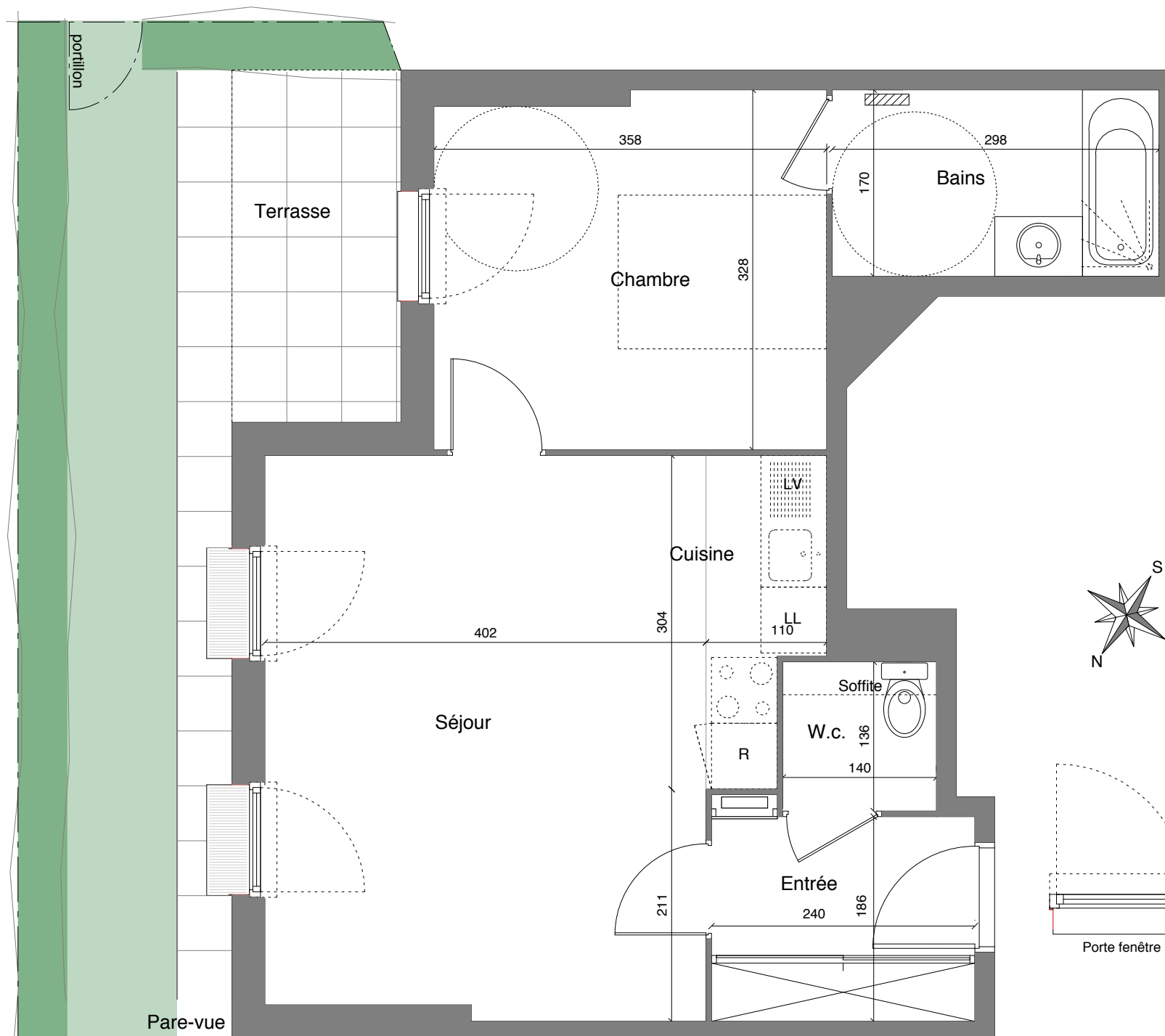
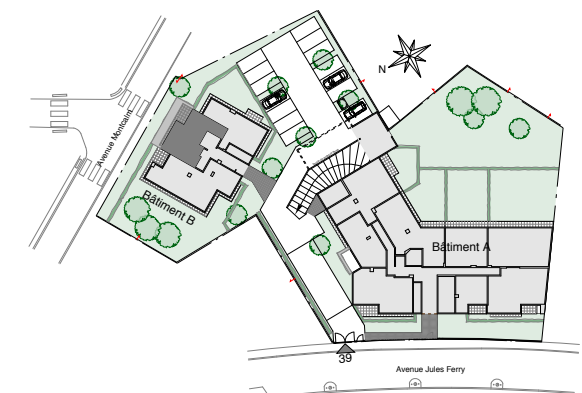
TABLEAU DES SURFACES

Entrée	4,70 m ²
Séjour/Cuisine	23,30 m ²
Chambre	11,50 m ²
S.d.B	5,10 m ²
W.c.	1,90 m ²

Jardin - Terrasse 23,50 m²

SURFACE HABITABLE TOTALE 46,50 m²

19.10.2015



LES COTES ET SURFACES SONT DONNEES SOUS RESERVE DES IMPERATIFS DE CONSTRUCTION ET DES TOLERANCES D'EXECUTION. CE PLAN PEUT SUBIR DES MODIFICATIONS DUES A DES IMPERATIFS TECHNIQUES.